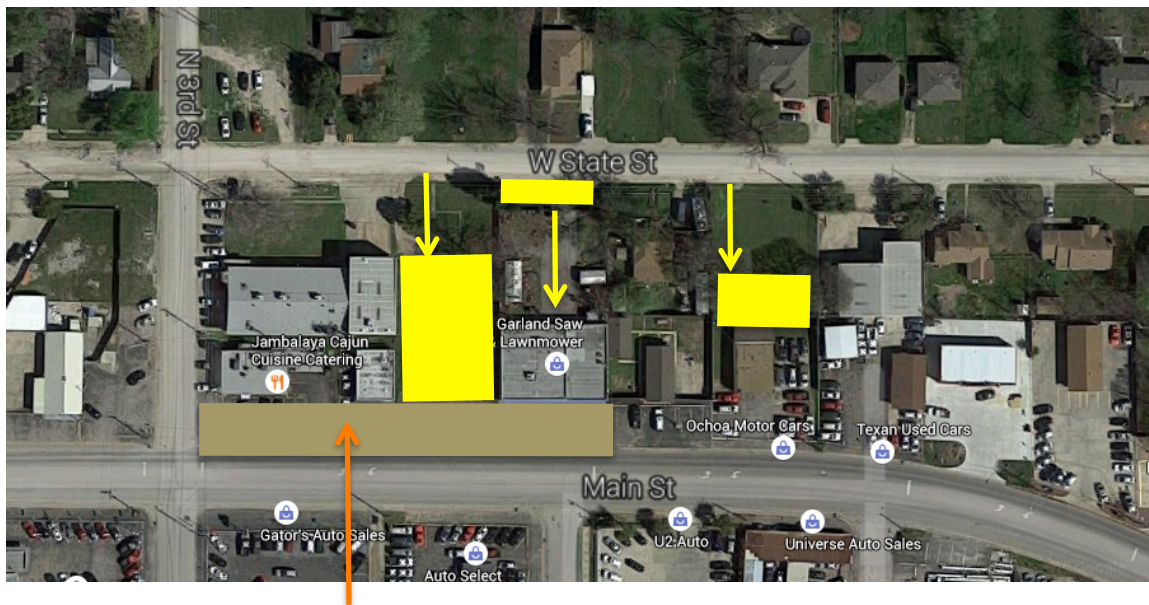


Walkable Main Street Business Parking Access from State Street

Parking for **HOOR Kitchen, Rose Detail and Garland Saw** could be accessed through the vacant lot between Garland Saw and Rose Detail. Also part of this vacant lot could be paved with crushed granite and allocated for parking. The part in the back corner with the tree could be made into a mini park with a table and a bench or two. Additional parking for the Church, Hour Kitchen is available on N. Third Street—also accessible by State street.

Garland Saw could also move their fencing on State street in toward their building and provide a row of parking along State Street and during the day the customers driving to pick up lawn equipment could enter from the back. Walk-in customers could enter from the front on Main. At night when the business is closed, the gates in back would be locked. The front that is now parking could be covered in crushed granite, landscaped, tables and chairs with umbrellas and a portable food cart business or two added to the space. Also this might be a good space to add a bocce ball court. There could be demonstrations of the lawn equipment in these areas where people stop to rest and talk. The other businesses could also provide demonstrations from time to time in front of their businesses.



*Note: **Brown patch** indicates the stretch in front of Hour Kitchen, Rose Detail, the vacant lot and Garland Saw and Lawn Mower blends into Walkable Main Street. It is paved with crushed granite and landscaping elements such as the barrels of blackberry bushes, perhaps a boulder fountain water feature and some raised beds are added—perhaps benches and a couple of portable business carts. **Yellow rectangles** indicate the addition of three parking spaces. This too would be paved with crushed granite and a few landscaping elements added to each make them more attractive and mask their appearance as a parking lot from residences on State Street.*

OFFICIAL DISCLAIMER

Everything in this document and all documents related to Walkable Main Street and Walkable Main Street Village up to and including the names of this project are to be considered as suggestions for possible plans. They are not official documents and the outcome of these suggestions and ideas is up for grabs—all up to people like you who decide, or not to participate in shaping your community and its local economy. – Elizabeth Berry

NOTES AND INSPIRATIONS FROM YOU

Be sure to send your ideas to Anita Goebel, City Council Representative for this district and also Mayor Doug Athas. They would love to hear from you.

mayor@garlandtx.gov

agoebel@garlandtx.gov